



# Emtune Ethernet Settings

April 2015

---

## Table of Contents

1.0 Windows 7.....3

## 1.0 Windows 7

To setup the Ethernet connection on Windows 7 ready for the ECU connection use the following steps.

- Type "View Network Connections" into the search window, accessed from the start menu. Windows should provide a list of results. Select View Network Connections.



or alternatively if the search function doesn't provide this:

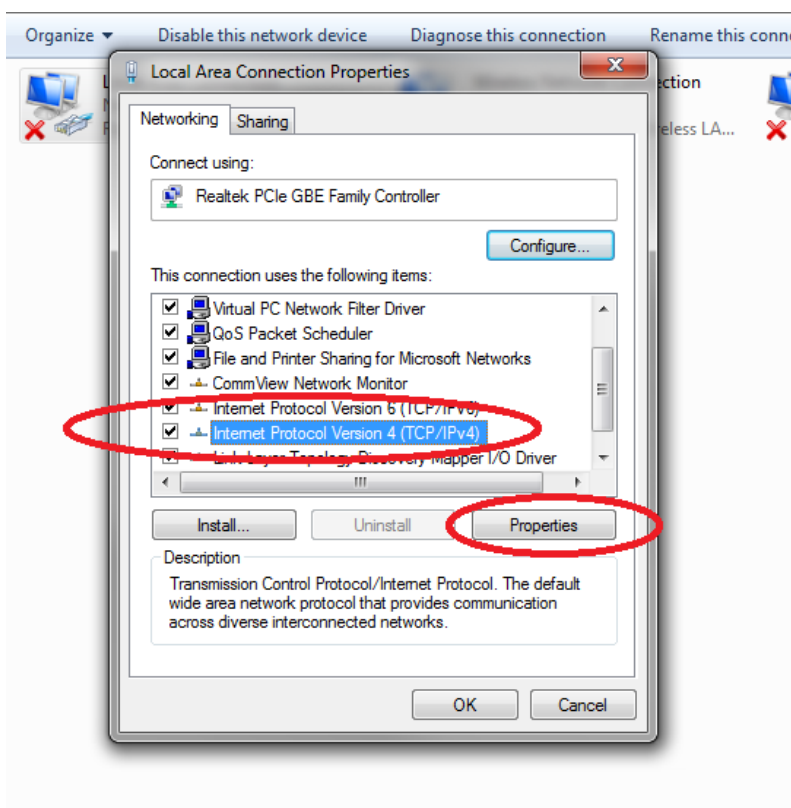
Start -> Control Panel -> Network and Internet -> Network and Sharing Center. Once in this menu select "Change Adapter Settings"



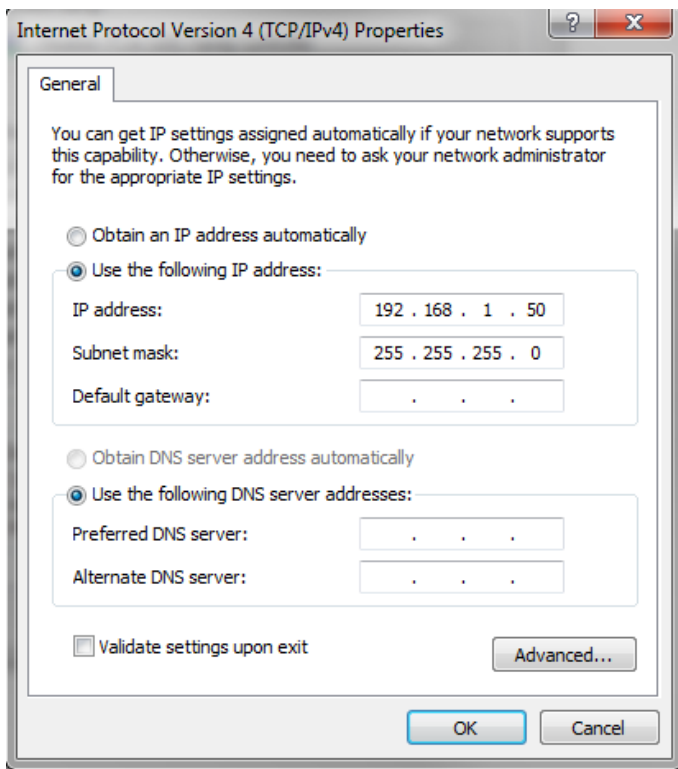
- The below menu should be visible. Select "Local Area Connection"



- Select TCP/IPv4 then click Properties



- Select "Use the following IP address" and enter in the address 192.168.1.50. The Subnet should automatically default to 255.255.255.0. Click OK.



- Done. Connect the Emtron Ethernet cable.